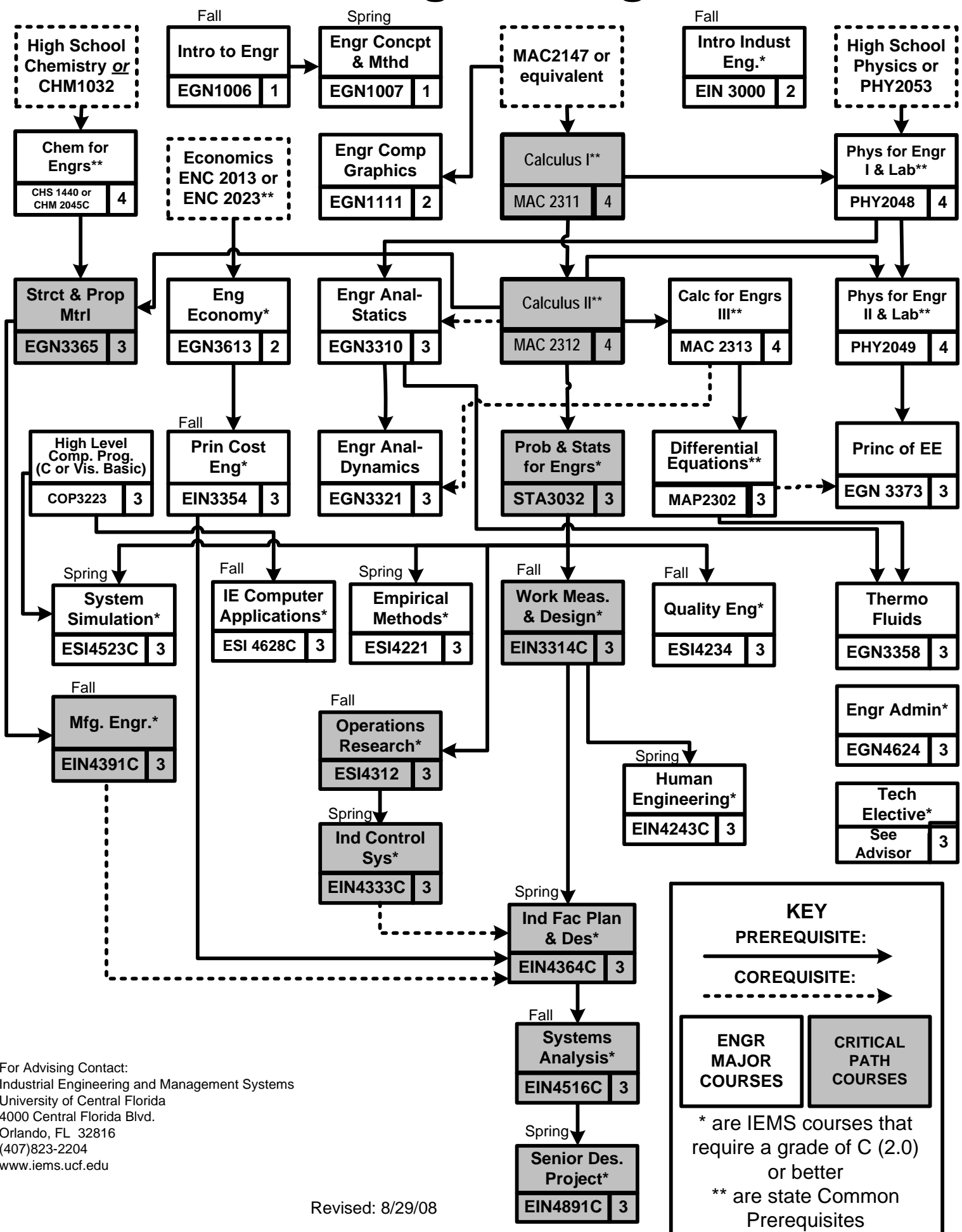


# Industrial Engineering 2008-2009



For Advising Contact:  
 Industrial Engineering and Management Systems  
 University of Central Florida  
 4000 Central Florida Blvd.  
 Orlando, FL 32816  
 (407)823-2204  
 www.iems.ucf.edu

Revised: 8/29/08

**KEY**

**PREREQUISITE:**

—————>

**COREQUISITE:**

- - - - ->

<b>ENGR MAJOR COURSES</b>	<b>CRITICAL PATH COURSES</b>
---------------------------	------------------------------

\* are IEMS courses that require a grade of C (2.0) or better

\*\* are state Common Prerequisites